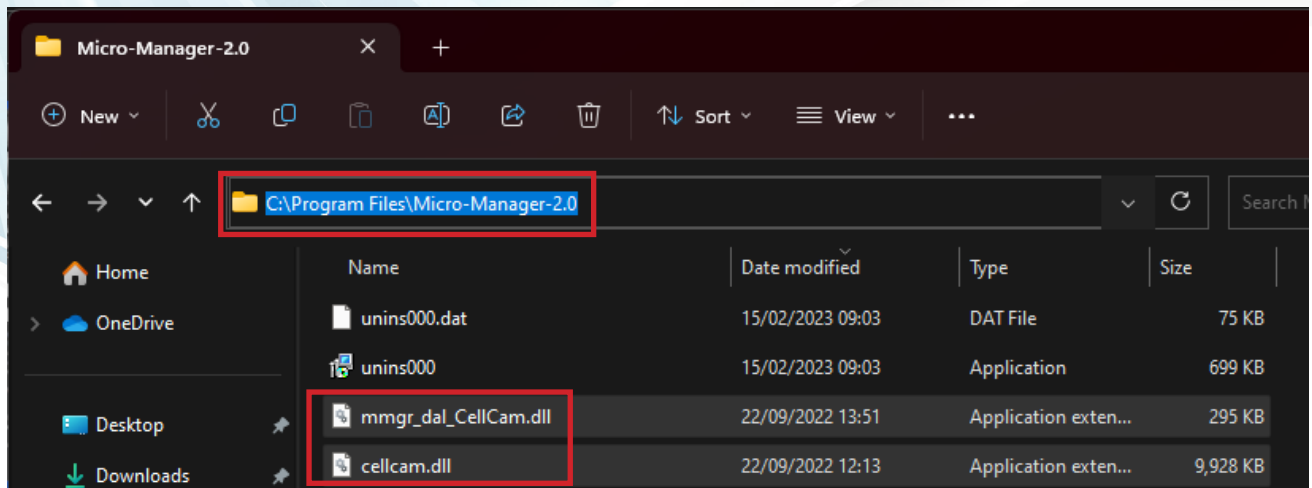


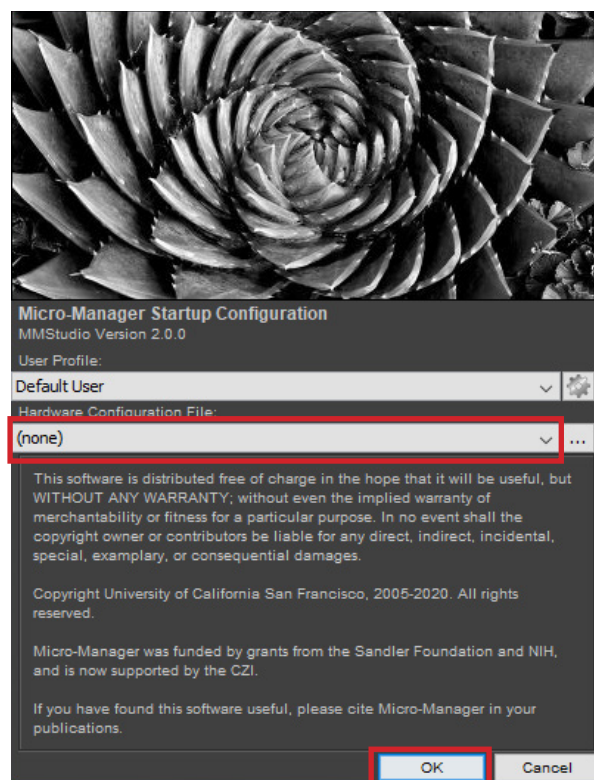
## Installation of CellCam in MicroManager 2.0.0

Connect the camera to a USB 3.0 superspeed port, the camera will install automatically and show in the Windows Device Manager under USB Devices.

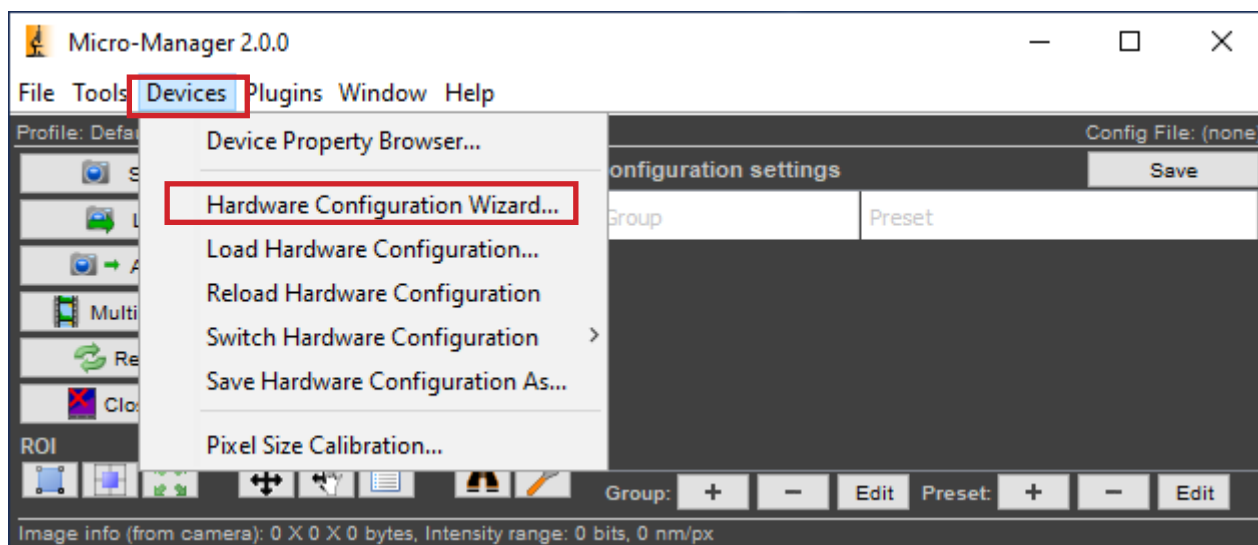
Navigate to C:\Program Files\Micro-Manager-2.0 and copy **cellcam.dll** and **mmgr\_dal\_CellCam.dll** into this directory.



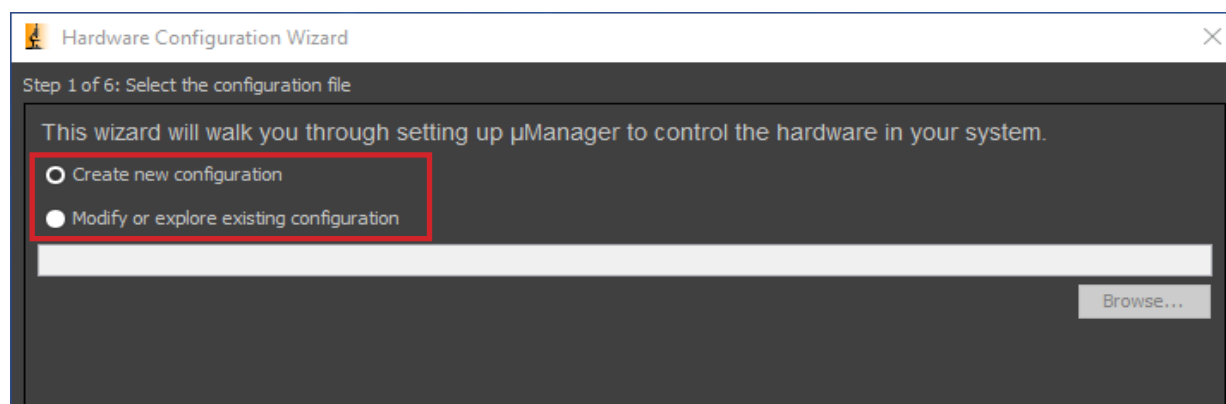
Open MicroManager, and for the hardware configuration file, either edit an existing config, or select none to start fresh and press OK.



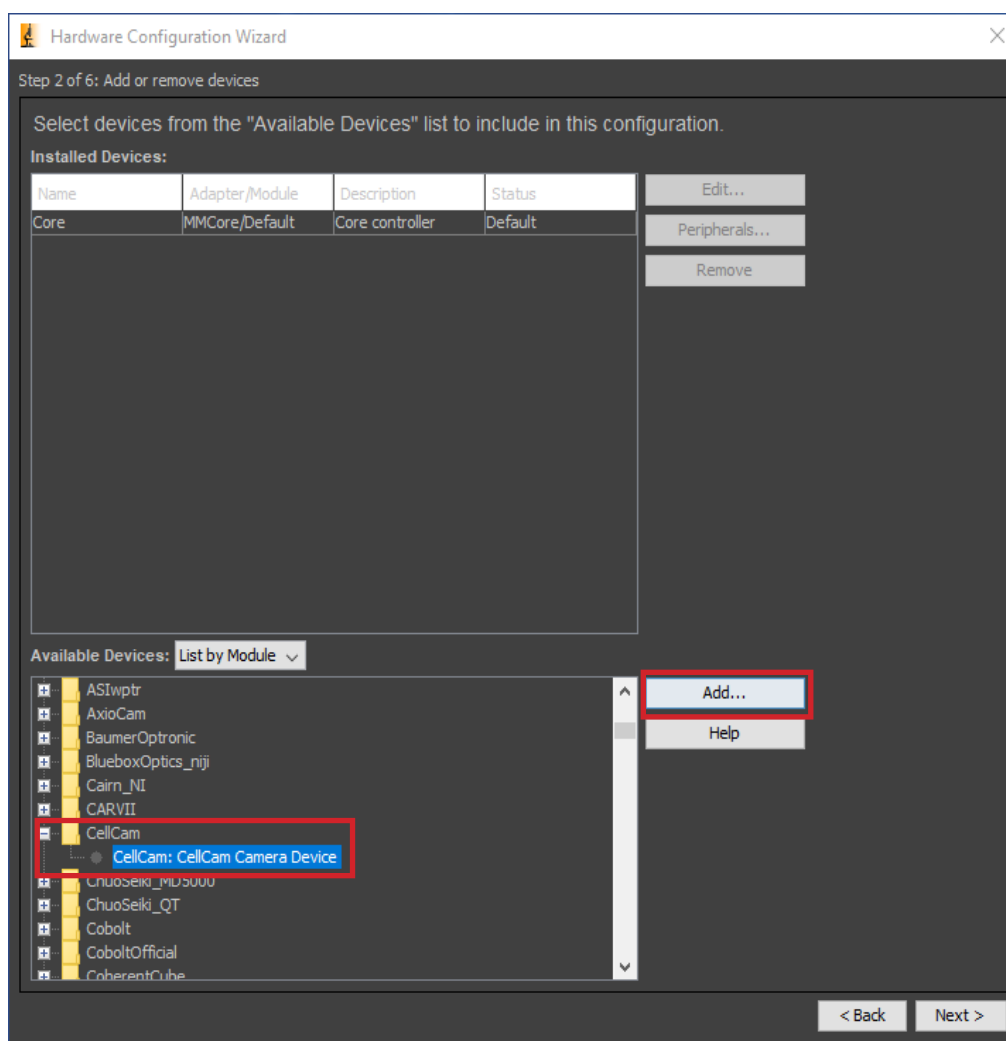
Under Devices, select Hardware Configuration Wizard



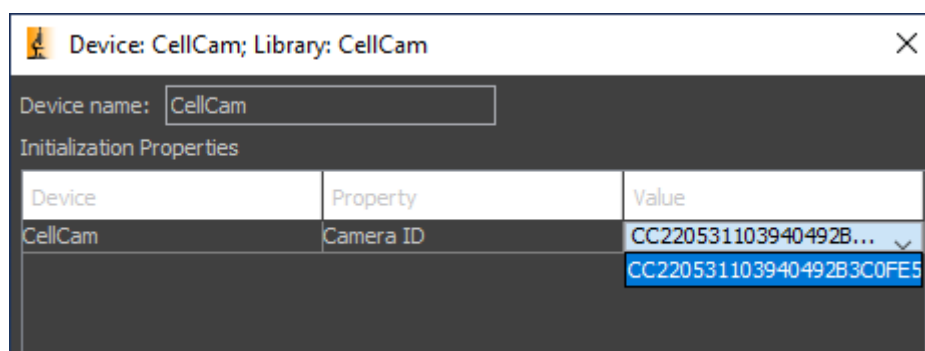
Select Create New Configuration, or modify an existing configuration. Press Next.



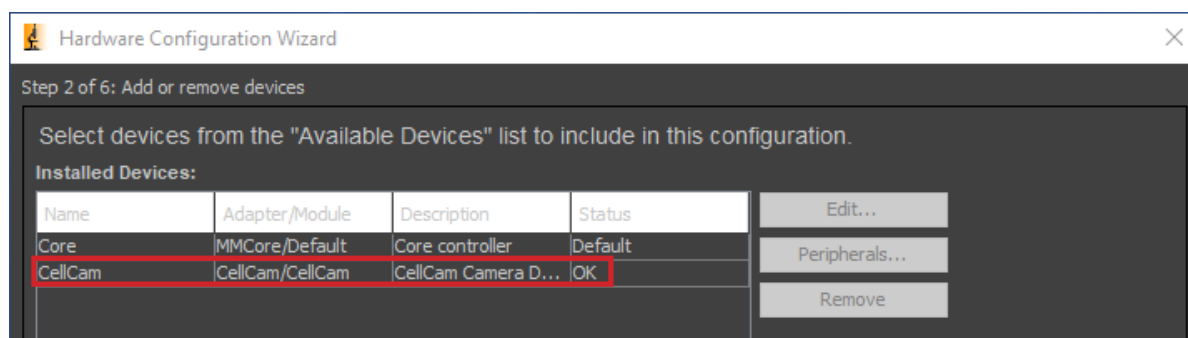
From the hardware list, scroll down to find CellCam, expand and click Add.



In the pop up window under Value, click this box and the serial number of the CellCam will show, and select OK.



The CellCam will show in the Installed Devices list with the status OK.



Click through the steps to the end and save the configuration.

